

An Díseart

**Plean straitéiseach bainistíochta don
tréimhse 2024-28**

Plean meántearmach 5 bliana,

**lenar léirítear plean gníomhaíochta
don Bhlian 1**



An Díseart Strategic Management Plan, for the period 2024-28
(5 years medium-term plan)

Achoimre Feidhmiúcháin

Tá an plean seo bunaithe ar ár misean agus ar fíis agus luachanna An Díseart. Tá ár gcroíspriocanna, scoláireacht agus rannphártaíocht an phobail luaite again.

'S í Joan Maguire a d'ullmhaigh an plean seo le síor comhairliúcháin leis an mBord, foireann an Dísirt agus Cairde.

Plean cúig bliana é seo chomh maith le plean gníomhaíochta don mbliain 2024. Déanfar athbhreithniú ar an bplean ag gach cruinniú den mBord agus ar an bplean ina iomlán ag an gcruinniú Boird leathdhéanach gach bliain.

Is mór ár meas ortha siúd go raibh baint acu leis an obair seo chun an plean a thabhairt chun críche.

Executive Summary

We are delighted to present our Discart Strategic Management Plan, this plan is based on our mission, and the vision and values of an Díseart. Our core goals are stated, Scholarship, Cultural Expression and Community engagement. This plan was prepared by Joan Maguire, in consultation with members of the Discart team, board members, workers and volunteers. This is a 3-year plan, and includes an Action Plan for 2024; this will be reviewed at each Board Meeting and the full plan will be reviewed at the penultimate Board meeting each year. We appreciate all of the work carried out by those involved in producing this plan.

Ráiteas Físe agus Mísín

Go mbeadh an Díseart mar lár ionad phobail atá beo anamúil ag léiriú agus ag cur chun cinn an Cultúr Ceilteach agus spioradáltacht mar chuid lárnach d'ár n-oidhreacht áitiúil.

Tá an Díseart suite ar láthair ina mbíodh Clochar na Toirbhirte fadó. Bunaíodh sa bhliain 1996 mar láthair taighde ins gach gné den spioradáltacht gaelach agus an cultúr ceilteach ina bhfuil diagacht, teanga, litríocht, ealaíon, dlíthe, béaloideas, luachanna, spioradáltacht, stair, ceol, ailtireacht agus nósanna san áireamh.

Thosnaigh an obair seo go léir faoi cheannaireacht agus stiúir an MSGR Pádraig Ó Fiannacht, trócaire air agus i bpáirt léna chnuasach luachmhar leabhar agus lámhscríbhinní atá coinnithe sa leabharlann poiblí sa Daingean.

Tá an Díseart i lámha an phobail le tacaíocht mná Rialta Chlochair na Toirbhirte, agus á riaradh ag Bórd Dheonach a dhéanann forálacha maidir aire agus cúram tailte an fhoirgnimh agus mór thimpeall. Tá an foirgneamh ar fail don bpoball ionas go gcothófar imeachtaí spioradálta ealaíonta agus cultúrtha.

Is áit áláinn na gairdíní i gcoir picnic agus spraoi agus cruinnithe cultúrtha.

Eagraíonn agus cruthaíonn an Díseart chomh maith le imeachtaí spioradálta agus oidhreachta i rith nab liana.



Vision Statement

The vision of an Díseart is to be the centre for a lively community giving expression to and promoting Celtic Culture and Spirituality as an integral part of our local heritage.

Mission Statement

Feidhmíonn An Díseart mar ionad do phobal bríomhar a chuireann an Cultúr agus an Spioradáltacht Cheilteach chun cinn mar dhlúthchuid d'ár n-oidhreacht áitiúil. Tá sé lonnaithe sa Daingean i seanChlochar na Toirbhearta. Ó cuireadh An Díseart ar bun i 1996, d'fhorbair sé mar ionad taighde ar gach gné den Spioradáltacht Éireannach agus den Chultúr Ceilteach, ina measc an diagacht, teanga, litríocht, ealaín, dlíthe, béaloideas, luachanna, spioradáltacht, stair, ceol, seandálaíocht agus nósanna. B'é Msgr. Pádraig Ó Fiannachta, trócaire air, a bhí ina cheann air agus tá ceangal ag An nDíseart lena chnuasach luachmhar lámhscríbhinní agus leabhar atá i dtaisce i Leabharlann an Daingin. Le tacaíocht Shiúracha na Toirbhearta tá An Díseart á stiúradh ag bord deonach a thugann aire don fhoirgneamh agus dá thailte is a dheánann iad a chothabháil. Tá an t-ionad ar fáil don phobal le haghaidh gníomhachtaí spioradálta, ealaíonta, cultúrtha agus Gaelacha agus is áit é gur feidir le daoine a mbuanna a thabhairt i lár an aonaigh agus iad a roinnt. Eagraíonn An Díseart féin imeachtaí cultúrtha, spioradálta agus oidhreachta i rith na bliana agus tá na gairdíní ar fáil le haghaidh picnící, teacht le chéile cultúrtha nó paidreoireacht phríobháideach agus machnamh.

The Díseart acts as the centre for a lively community giving expression to and promoting Celtic Culture and Spirituality as an integral part of our local heritage. Housed in the former Presentation Convent premises in Dingle. Founded in 1996, An Díseart developed as a centre for the research into all areas of Irish Spirituality and Celtic Culture including theology, language, literature, art, laws, folklore, values, spirituality, history, music, archaeology and customs led by the late Mons. Pádraig Ó Fiannachta and associated with his valuable collection of manuscripts and books now housed in the Dingle Library.

With the support of the Presentation Sisters, An Díseart is in the hands of the community managed by a voluntary board who make provision for the care and maintenance of the building and grounds. The building is available to the community for the development of spiritual, artistic and cultural activities. The organisation develops volunteerism in the community. The gardens are a location for family picnics and cultural gatherings.

An Díseart organises and promotes cultural, spiritual and Heritage events throughout the year.

Ár Luachanna

Tá sé do sprioc again mar Bhord obair sármhaith a dhéanamh agus gur b'é an dearcadh atá again ná foghlaim ó chásanna de réir mar a thagann siad chun cinn agus úsáid a bhaint as réiteach fadhbanna lom díreach. Úsáidfear scilleanna agus ceannaireacht le réiteach na bhfaidhbeanna se oar shon fheabhsú na heagraíochta de shíor.

Our Values

These values permeate the organisation and apply to any person who contributes to the running of An Díseart including, board members, staff, workers on schemes and members of Cairde An Dísirt.

We are committed to operational excellence in that we are of an attitude to learn from situations as they arise. We will work towards improving the organisation continuously by learning from problems as we encounter them and use of problem-solving and leadership [skills](#) to improve the organization continuously.

Scoláireacht

Tá an Bord tiomanta do scoláireacht i dtaighde ar luath Chríostaíocht na hÉireann agus spioradáltach Cheilteach chun cur lenár dtuiscint orainn féin ar an ndomhan agus go gcuirfidh sé feabhsú agus follaíne an phobail. Déanfaimd é tríd comhoibriú le Ollscoil Chroí R ó Naofa agus aollscoileanna eile.

Scholarship

We are committed to scholarship in research into Early Irish Christianity and Celtic Spirituality so as to contribute to our understanding of ourselves and our world, and whose discoveries enhance the wellbeing of the community and visitors, we share this commitment with academics in Sacred Heart University.

Rannpháirtíocht Pobail

Tá sé de aidhm again oibriú chun ár rannpháirtíocht pobail a dhoimhniú agus a leathnú chun úsáid an phobail as na h-áiseanna le haghaidh gníomhaíochtaí spioradálta ealaíonta agus cultúrtha a spreagadh. Ag obair le Cáirde an Díseart beidh an rannpháirtíocht iomlánaíoch, comhoibritheach agus inbhuanaithe le cabhair ó Chairde an Dísirt agus ag súil go mbeidh cumhachtú an phobail mar thoradh air.

Tá an Bord tiomanta do luachanna an chomhionannais agus na huilechuimsitheachta in éiteas na heagraíochta. Déileáfar go cothram le gach naon. Fáiltímid roimh gach cumas, reiligiún, cine agus claonadh gnéasach.

Tógann an Bord ortha fhéin iad fhéin a iompar le hionracas, chomh maith le caidreamh dhílis a chothú laistigh den aonad in ndíleáil oibre leis an bpobal.

Achoimire

Tá riaradh an Dísirt faoi bhórd dheonach a dhreacthaigh agus a bheidh ag cur aidhmeanna an phlean straitéisigh seo le chéile, tháinig an spreagadh chun an plean seo a dhreachtú ó phlé ginearálta agus ón rialtóir carthanais leis. Cuirtear an plean seo i bhfeidhm i dtréimhse éiginnte agus an phaindéim covid fós go láidir i bpobail ar fuaid an domhain mhóir. Dhéan an phaindéim seo ana dhíobháil do ghnáth reactháil An Dísirt agus na rudaí éagsúla a bhíonn ar siúl anseo go mórmhór an laghdú atá tagtha ar uimhreacha na gcuairteoirí go dtí an Institiúid le tamall anuas.

Community Engagement

We are committed to working to deepen and expand our Community Engagement. To encourage the use of the community of the facilities for spiritual, artistic and cultural activities, working with Cáirde an Dísirt, the engagement will be holistic, collaborative and sustainable, resulting ultimately in the empowerment of the community.



Equality

We are committed to the values of equality of treatment and inclusivity in the ethos of the organisation. At an Díseart all people will be treated equally; we welcome all abilities, cultures, religions, races and sexual orientation.

Integrity

We are committed to behaving with integrity and to fostering integrity within the workplace and in dealings with the community.

Authenticity

We are committed to developing authentic relationships within the board and in the workplace and within its dealings with the community. Authenticity is the basis for establishing trust and trustworthiness and is a central goal of the An Díseart.

Honesty

We are committed to honesty in their dealings with other members of the board, the staff and the community, this means being straightforward about reasons for choosing certain strategies and goals over others, being honest about successes and failures and in doing so we hope to earn the respect of one another, the staff and the community.

Transparency

We are committed to transparency in its decisions and actions

Teamwork

We understand that success can only be achieved through teamwork and clear understanding of each person's role.

Accountability We are accountable to the governing agencies and to the stakeholders.

Overview

Is comhlacht carthnachta é Díseart Institiúid Oideachais agus Chultúr Dúchais a bhfuil sé mar phríomh aidhm aige deis a thabhairt do dhaoine breis tuisceana a fháil agus staidéar a dhéanamh ar ár gCultúr Dúchais agus Ceilteach, maidir le teanga, litríocht, ealaíon, spioradáltacht, stair, seandálaíocht, ceol agus nósanna dúchais.

Tá Bord Stiúrthóirí i gceannas ar Díseart comhdhéanta le shaineolaithe bithéagsúlachta, acadúla, oideachais, spioradálta agus ealaíontóirí chomh maith le hIonadaithe ón bpobal. An Díseart is managed by a voluntary board, which has drawn up, and will be implementing the aims of this Strategic Plan. This our second strategic plan and is based on the foundation laid by our first plan.

The plan comes into effect at a time when the Díseart mission is progressing and the community use of the building has expanded with hundreds of people engaged in activities, on a weekly basis. It is also the time when An Díseart five year licence agreement for allocation of rooms with Sacred Heart University is nearing an end. We will continue this relationship through the Deepe Mapping Project and the establishment of the Office of Irish Studies a joint venture between An Díseart and SHU.

New opportunities for co-operation are developing with KerryETB which already holds Irish language classes in the building and English classes for refugees from Ukraine. We are extending this co-operation into the garden, where the greenhouse will become a classroom for gardening courses.

Furthermore through other co-operations, with Fáilte Ireland, the intention is to develop An Díseart as a centre where locals and visitors can learn about Irish Spirituality, this will involve plans to develop the content on display and to substantially develop the digital marketing aspect.

Through good relationships with SHU we are looking to develop relationships with universities abroad that teach Irish language and Gaelic culture.

This is done in the context of the approaching year 2029 when we will celebrate 200 years since the Presentation Sisters first arrived, in October 1829 bringing education and social services to a very different Corca Dhuibhne, where poverty was widespread. This year is also the 500th anniversary of the Treaty of Dingle, which was signed in April, 1529.



Seo a leans na príomhspríocanna atá leagtha amach ag an mBord:

Aim 1: Promote Celtic Culture and Spirituality through the facilitating and organising of events, courses, concerts, publications, seminars, conferences etc. etc. and supporting artists and poets. Tá an Díseart ag diriú ar an margadh cultúrtha le hionad oidhreachtá léirmhíthe a ofráil don míle turasóirí a thagann go dtí Corca Dhuibhne in aghaidh náb liana. Cuirfear cursaí cultúrtha ar fail dóibh súid a leiríonn spéis níos doimhne.

Aim 2: To provide an environment where artistic activity is supported through support of individual practitioners and community activities that develop the rich cultural traditions of the area. Imeachtaí Cultúrtha a eagrú, a léireodh meas agus úsáid na teanga dúchais, chomh miaht le himeachtaí Chultúrtha Aitiúla.

Aim 3: Develop An Díseart building and gardens as an area of cultural activity, study, peace and contemplation by ensuring the building and gardens are available to all through ensuring their maintenance and accessibility

Aim 4: Increase visitor numbers: Forbairt a dhéanamh ar Áis Turasóireachta den scoth, a thabharfaidh deis do chuirteoirí/thurasóirí eolas a fháil ar an gCultúr Dúchais/Ceilteach, mar aon leis an spioradáltacht, chomh maith le turas faoi threoir at na foirgnimh stairiúla Neo-Ghotach, na garraithe, an séipéal a mháionn an bailiúchán suaithinseach is mó in Éirinn d'fhuinneoga ghloise dhaite de chuid Harry Clarke

Aim 5: Review energy usage with a view to reducing carbon footprint of An Díseart

Location

An Díseart is located in Corca Dhuibhne which was once a remote area, dotted with Early Christian Communities, including Riasc, Baile Riabhach and Cill Mhaol Chéadair, remnants of their presence is still evident in the landscape. The area is now connected by technology and an improved road infrastructure and has witnessed a change in population profile over the past half a century.

When the Presentation Sisters arrived in 1829 they entered a close knit community. The 21st century community in Corca Dhuibhne includes a range of nationalities, beliefs and cultures.

The vision of an Díseart is as a focal point for this lively community giving expression to and promoting Celtic Culture and Spirituality as an integral part of our local heritage, through the celebration of Celtic festivals, arts, culture, heritage, education and religious practice, as well as provide for education and further research into early life in Corca Dhuibhne, with particular emphasis on Early Christian life.

Anailís SWOT	
Strengths Bhuntáiste an Dísirt	Weaknesses Mhíbhuntáiste
Daoine cumasacha, ionraic ina mbaill don mBord agus saineolas acu ar réimse leathan ábhar.	Táimid ag braith ró-mhór ar oibrithe deonacha nó ar oibrithe páirtaimsireacha scéimeanna SOLAS Nó SST.
Tá foirgneamh breá againn, le ardaitheoir, chomh maith le córas teasa, leictreachais agus Slándála uasghrádaithe ann.	Ag braith ar SHU le haghaidh teacht isteach, gan iad, cad a tharlódh? Níl sruth airgeadais leanúnach/teacht isteach leanúnach againn. Gá le hinfheistiú chun an foirgneamh a chur in oiriúnt don mhisean go hiomlán agus, chuige sin, gá le cliant mar ancaire a chinnteoidh teacht isteach rialta.
Na Gairdíní atá thar a bheith go hálainn	
Suíomh idirlín agus comh oibriú le Fáilte Ireland chun é a fhorbairt	
Tá oibrithe ar scéimeanna SOLAS agus SST againn.	Tá an foirgneamh sean agus a lán costais cothabhála ó bhliain go bliain.
Caidreamh fad téarmach le Ollscoil SHU	Gá le cumarsáid chun ról an Dísirt a chraobhscaoileadh go forleathan.
Tá tacaíocht againn ó Shiúracha no Toirbhirte, comhoibriú agus cairdeas agus léas fada ag an mBord uathu	Cúram breise ag baint le cosaint na ngairdíní
Tá an séipéal ann le fuinneoga iomráiteacha Harry Clarke agus ón Comhlacht Meyer, agus an t-adhmadóireacht.	Níl próifíl láidir ag An nDíseart ar na meáin shóisialta.
Tá sé suite i lár an bhaile, fuirist teacht air do chuirteoirí	
Níl aon institiúid eile cosúil leis i gContae Chiarraí.	Níl cuid do lucht gnó an Daingin ró thacúil.
Ealaíontóir agus file cónaitheach aige ag cur na n-ealaíon chun cinn.	Ní ghabhann mórán des na turasóirí a thagann ar bhusanna chughainn, níl sé fuirist do bhus páirceáil in aice an Díseart .
Tá an Díseart seanbhunaithe anois, ta sé ann ó 1996.	Gá le ceangal tríú leibhéil chun na cúrsaí, modúil acadúla a fhorbairt.
Tá an Díseart in aice le Leabharlann an Daingin.	Gá le ealaíontóir comhnaitheach.
Tá roinnt seomraí codlata againn sa bhfoirgneamh.	Established practices
Táimid gar don gcarr chlós nua laistíos do Shéipéal Naomh Muire.	Underuse of resources (lots of unused space)
Tá Cairde an Díseart sa chúlra ullamh chun tacú.	Shortage of academic input relevant to Early Irish Christianity
Tá Stadas Charthanachta ag an Díseart.	Gá le Bainisteoir/Stiúrthóir lánaimseartha chun deiseanna forbartha a dhéanamh.

Oidhreacht Phádraig Uí Fhiannachta agus Siúracha na Toirbhirte	While there is accommodation, the rooms available, say for a retreat group, which was visualised by Monsignor Pádraig O Fiannachta, has been reduced considerably due to the building of a classroom and there is very little space for en suite bathrooms or cooking facilities. To improve or extend those facilities would take a lot of money and extra staff as well.
Tá troscáin agus achmhainní teagaisc , léachta agus seimineáir réasúnta maith ag an Díseart.	Easpa cumarsáide ó am go chéile idir na páirtithe leasmhara – An Fhoireann, An Bord, Cairde an Díseart, Solas, Údarás na Gaeltachta agus pobal Chorca Dhuibhne
Tá an Díseart, idir fhoirgneamh agus gháirdín, ina thearmann agus ina sheoid tharraingteach ealaíne i lár an Daingin.	Dependent on being open to engage with community
Is féidir leis An Díseart fáilte mór a chur roimh ghrúpaí ó chian is ó chongar ar mhaith leo leas a bhaint as áiseanna an Dísirt.	Lack of online presence/virtual engagement (e.g. Twitter, Instagram)
Oscailte mar ionad cuairteoirí, mar institiúid oideachais agus mar thearmann éiceolaíochta, feidhmíonn an Díseart mar ‘shlí na háilleachta’ (<i>via pulchritudinis</i>).	Easpa fograíochta san fhoirgneams agus sa gháirdín.
A reputation for facilitating and co-operating with local festivals and class organisers	
Located in area with so many artefacts of early Christianity	
Community engagement	
Reports commissioned on The condition of the building, accessibility audit, Energy usage Audit	
Díseart Library and proximity to Dingle Library	
Opportunities Dheis	Threats Bhagairt
To inform educate and develop a centre for the study of Irish Spiritual Heirtage and to promote the expression of our Cultural and Spiritual Heritage in the 21 st Century	Deviating from core mission
Development of visitors experience to provide information on Irish Culture and through paying a fee to contribute to the costs of running the centre.	Scéimeanna SStagus SOLAS ag críochnú toisc gan pearsain a bheith ar fáil nó incháilithe.
Ollscoileanna a mhealladh – mar atá déanta le blianta fada le SHU	Dainséar go mbeadh iompar mí shóisialta sna Gairdíní.

Tacaíocht airgid a fháil ón rialtas, ón gCo. Chontae, Comhairle Oidhreachta. Sparántaíochtaí Ealaíona éagsúla a fháil ó leithéidí Ealaíon na Gaeltachta	Ionad spleáchais ar SHU. Foirgneamh an CBS atá athchóirithe ag SHU. D'fhéadfaidís deireadh a chur leis an usaid de seomraí go hiomlán amach anseo agus Coláistí eile 3ú leibhéal eile a mhealladh chucha.
Cursaí nó imeachtaí spioradálta a reachtáil.	Níl go leor tacaíochta ó mhuintir an Daingin & beidh sé seo an-thromchúiseach amach anseo.
Imeachtaí ealaíona nuair is féidir, go háirithe leis an bhfile & ealaíontóir cónaitheach. Spás rialta a sholáthar do thaispeántais físealaíne, cleachtadh cór, ióga, ranganna Gaeilge &rl	Níl go leor tacaíochta ó mhuintir an Daingin & beidh sé seo an-thromchúiseach amach anseo.
Tuiscint a thabhairt do phobal Chorca Dhuibhne agus do chuirteoirí ar shaol na mban rialta, m.sh. tráthanna paidreoireachta &rl.	An iomarca páipéarachais agus rialachais má táimid ag braith ar oibríthe deonacha.
Eolas a thabhairt ar shaol an Mhons. Pádraig Ó Fiannachta.	Lonnaithe I sean fhoirgneamh agus ana chostasach é a coimead ar oscailt.
	Failure to keep its vision alive. it is only the vision when it is maintained that will inspire and unite all who are involved to work together and help to overcome the obstacles along the path.
Ionad taighde a fhorbairt leis an spás atá againn agus an leabharlann atá againn agus leabharlann Uí Fhiannachta i leabharlann an Daingin.	Necessity for clear aims and progression plan
Breis cuairteoirí a mhealladh do fuinneoga Harry Clarke, Scéal na Siúracha, Ealaíon Yates, na Gairdíní agus rl.	Conflicting interests and views of how the Díseart can develop
Daoine aonarach nó grúpaí beaga a mhealladh chun úsáid a bhaint as achmhainní an Díseart agus ar ndóigh na háiseanna thar oíche atá againn.	Loss of momentum due to rapid change in board members, five retired at one time, lack of continuity to introduce new members to mission
Develop facilities for Irish language writers	Lack of person in the building to manage night time and weekend activities
Education on nature and biodiversity Incorporating natural heritage education	Garden can become over run with invasive species and compromise the biodiversity of plant life growing there
Developing a partnership with SHU in terms of Centre for Irish Studies with research facilities especially in the area Celtic Spirituality and Culture with link to library of an Mons. but also, pastorally in outreach	Too much work on too few people, volunteers and team can become disillusioned

to the local community	
Continue to build relationships with the community many of whom were educated by the Presentation Sisters.	
Ionaid a sholáthar do fhéilte áitiúla – m.sh. Féile na Bealtaine, Féile Bheag Filíochta, Féile Bia an Daingin &rl	
More public talks	
Space for artists and residency Áiseanna á sholáthar d’ealaíontóirí ar thréimhsí cónaitheach	
Ionaid á chur ar fáil ó am go chéile go chriúanna scannánaíochta – Imram	
Scannáin a thaispeáint	
Deiseanna a thabhairt do mhuintir Chorca Dhuibhne, áiseanna an Dísirt a úsáid	

General description

With the support of the Presentation Sisters and guided by a voluntary Board of Directors, who make provision for the care and maintenance of the building and grounds as well as all other managerial aspects of the Institute, An Díseart was set up as a non-profit making organisation and a registered charity in 1998, following a couple of years of pre-planning. The Díseart is situated in Daingean Uí Chúis, the largest Gaeltacht town in Ireland and is housed in the former Presentation Convent. It aims to act as the centre for a lively community giving expression to and promoting Celtic Culture and Spirituality as an integral part of our local heritage.

An Díseart, inspired and led by the late Mgr. Pádraig Ó Fiannachta, initially was developed as a centre for research into all areas of Irish Spirituality and Celtic Culture including theology, language, literature, art, laws, folklore, values, spirituality, history, music, archaeology and customs, facilitated by his academic presence and associated with his valuable collection of manuscripts and books now housed in the Dingle Library.

The centre is available to the community for the development of spiritual, artistic, cultural, heritage, educational and Irish language activities and is a place for everyone to bring and share their gifts. An Díseart aspires to organise cultural, spiritual and heritage events throughout the year and the magnificent gardens are a location for family picnics, cultural gatherings and private prayer and meditation.

Located in this peaceful haven on Green Street, Dingle, Díseart occupies a neo-gothic building designed by JJ McCarthy. Described as “breath-taking”, “magnificent” and “a national treasure”, by some of its visitors, the building is home to a beautifully-proportioned chapel in which can be found six two-light lancet windows created in 1924 by one of the foremost stained glass artists of all time, Harry Clarke. The windows, along with the tranquil walled gardens, first laid out in 1849, have become a popular attraction for locals and some of the many visitors to Dingle.

Na Gairdíní

Tá na gairdíní faoi bhainistiú, Breda Enright le cabhair ó Kein Martin, Páidí Búdhlair agus Tom Healy. Tá na gairdíní i dtrí chuid, do phlean Mary Reynolds.

Gairdín 1 : Gairdín na gCrann

Déanadh an gairdín uachtarach, gairdín na gcrann teaghlaigh agus é ar intinn spioraid phobail Daingean Uí Chúis i gCorca Dhuibhne a neartú agus cur lenár gceangal leis an domhan a dhoimhniú, chomh maith le timpeallacht shéimh mhín a chruthú sa ghairdín coille crannmhar seo. Tá fuinneoga Harry Clarke mar chúlra ar na gairdíní a leagadh amach don gcéad uair sa bhliain 1849, gairdíní suaimhneasach ciúin go bhfuil forbairt mór déanta ortha le blianta anuas. Ní aon iontas go bhfuil tarraingt agus spéis ionta seo ag cuairteoirí agus ag an pobal áitiúil.

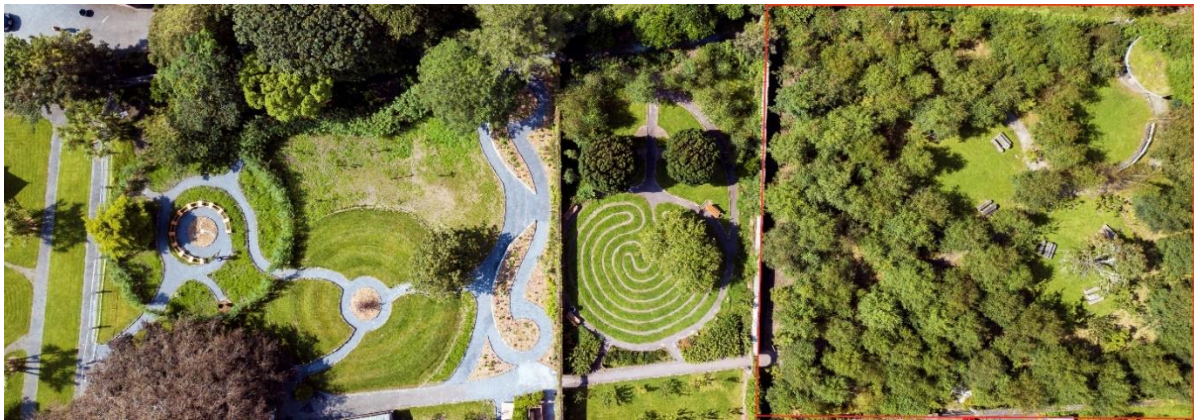
Gairdín 2 – Gairdín Paidir

Is gairdín dronuilleogach é gairdín urnaí atá timpeallaithe ag fallaí árda. Is féidir dul isteach anseo trí dhoras árd airse. Tá labyrinth paidir sa ghairdín, ina bhfuil stáisiúin na croise leagtha amach le cloche ar an dtalamh ar an dtaobhthiar den labyrinth. Tá dhá chrann iúir iontacha Éireannach sa ghairdín (*Taxus Baccata Fastigiata*) chomh maith le roinnt tor torthaí.

An Gairdín Bithéagsúlachta céadfach.

Is é seo an forbairt is déanaí. Tá sé mar aidhm ag an ngairdín glacadh leis an dtuiscint trí bholadh, dathanna agus scáth a úsáid. Tá áit chun suí sa ghairdín le bláthanna fiáinne curtha ann. Tá tollán saileach ann agus leapacha árda ina gcuirfear luibheanna leighis áitiúla. Gné ar Leith den chuid seo den ghairdín is ea reilg mná rialta na Toirbhirte atá cosanta ag dhá dhealbh aingeal ag an ngeata agus iata isteach ag ráilí iarainn bána. Tá crann feá copair aibí sa reilg a d'fhéadach a bheith mar chuid den fhásra bunúsach agus más ea, roimh bhunú agus úsáid an ghairdín.

The gardens are under the management of Breda Enright, with assistance from scheme workers and in the future with support from KerryETB trainees. They are developed in three parts according to a design made by Mary Reynolds.



The **Upper Garden (Family Tree Garden)** was made with the intention of strengthening the sense of community in Corca Dhuibhne. It was also made to heighten our sense of place and deepen our connection with the earth while creating a gentle habitat in this woodland garden.

‘Sé a bhí i gceist leis an gairdín ná spiorad an phobail a neartú i gCorca Dhuibhne, cur lenár n-ómós áite agus lenár gceangal leis an gcruinne chomh maith le timpeallacht shéimh a chruthú sa ghairdín crannmhar seo.

Garden II (Prayer Garden) is a rectangular garden enclosed by high walls and is reached through a pointed arch doorway; the garden contains a prayer labyrinth with the stations of the cross as stones laid out on the western side of the labyrinth. This garden also hosts two magnificent Irish Yew trees (*Taxus baccata* ‘Fastgiata’) and includes a number of fruiting bushes. The garden will be the location of the ‘Community Lamb’ developed by the community under the guidance of sculptor Ben Dearnley

The Sensory/Biodiversity Garden

The sensory/biodiversity garden is the latest development; the garden aims to enhance the senses through the use of colour, smell and shade. The garden has a seated area planted with wildflowers, a willow tunnel, and raised beds which will be planted with local medicinal herbs.

A separate feature of this section of the garden is the Nuns’ Graveyard, guarded by two angel statues at the gate and enclosed by white iron railings. The graveyard itself is dominated by an impressive mature, pollarded copper beech tree which may be part of the original garden vegetation and thereby predates the establishment and use of the garden.

The Building Facilities

The Díseart contains a number of well-equipped rooms, of various sizes, currently widely used by community groups such as choirs and languages classes also used by students from universities who attend courses in the building, while also available for other uses (concerts, readings, exhibitions, etc.) The chapel is also available for prayer and contemplation and musical events. The chapel maintains an air of prayerfulness added to be the weekly Masses and the prayers of people who visit.

A library of books on spirituality and Irish language, based on the collections of Fr. Jim Sheehy and Mons Pádraig Ó Fiannachta and bequests from Muintir de Paor, Fr. Danny O Shea and Denis Sexton, is housed in the building and available to researchers and a comprehensive library donated by our former academic director, Mons. Ó Fiannachta, who was Dean of Celtic Studies at the National University of Ireland Maynooth, is housed in Dingle library close to An Diséart.

As well as the classrooms and chapel in our three-story building, there is a reception area, some other office spaces as well as several single bedrooms, on the top floor of the building. There are also a couple of larger bedrooms, one currently used by the artist in residence, available as artists' studios and for scholars. There are two well-fitted kitchens, one on the ground and one on the top floor. All floors are served by a staircase as well as a lift.

Bailiúcháin

Bailiúcháin mar chuid de chnámh droma agus chreatlach an fhoirgnimh. Tá fuinneoga Harry Clarke agus fuinneoga Meyer chomh maith sa tsáipéal. Tá múrmhaisiú agus fresco le Ella Yates le roinnt saothair ealaíne eile. Tá leabharlann agus míreanna eile leis an Mons. P. Ó Fiannachta agus le mná rialta na Toirbhirte. Níl clarú foirmeálta déanta ortha fós, ach beidh amach anseo agus iad ar fáil le haghaidh taighde roinnt taispeántas féideartha suimiúil.

Collections

As part of the fabric of the building, we have the Harry Clarke Windows as well as Meyer windows in the chapel, there are murals and a fresco by Ella Yates, as well as some other artworks. There, the board asked is the library and other items (Mons Ó Fiannachta collection, Presentation Sisters collection). These have not yet been formally catalogued, but are the basis for some interesting potential exhibitions.

Foireann

Tar éis dhá bhliain de fhograíocht agus trí babhta d'agallamh, níor eirig hleis An Diséart duine a fhostú chun an post mar Bainisteoir Turasóireachta a líonadh. Cuirtear ceist ar bhail den bhoird an mbeidh duine acu sásta chur isteach ar an bpost, toisc go raibh gá le duine sa Díseart. Ceapaidh duine ón mBord ar chonradh dhá bhliain(2024-2026). Baintear tairbhe as roinnt oiliúnaithe chomh maith le hoibrithe Fás, Solas agus oibrithe eile ar scéimeanna oiliúna atá urraithe ag an rialtas. Tá cuid acu seo linn le fada an lá . Tá an duine atá ceaptha ag tabhairt cabhair den mBord An Diséart a bhainistiú.

Team

After two years advertising and interviewing for a manager. With under funding from the Údarás na Gaeltachta, the board asked a member of the board to apply for the 2 year position,with the reDiscart has appointed a Tourism Manager for two years with support from Údarás na Gaeltachta under the Scéim Bainistíocht Turasóireachta, the Tourism manager assists the board in co-ordinaating the day to day in th day to day running of the

The organisation benefits from having 5 SOLAS and 1 SST workers on government-sponsored training schemes. Some have been with An Discart for many years.

Foirm Rialachais

Is carthanacht cláraithe an Díseart, cuideachta faoi theorann ráthaoíochta atá á bhainistiú ag bord stiúrthóirí.

Form of governance

The Díseart is a registered charity, a Company Limited by Guarantee. It is managed by a Board of Directors, the current members of which are:

Board of Directors

- Breda Enright, Chairperson, Biodiversity expert
- Pádraig Ó Foghlú – Company Secretary, Solicitor
- Eileen Clear – Member of the Presentation Order
- Máire De Bhál, Member of the Presentation Order
- Micheál Ó Conchúir, Vice chairperson and Retired Primary School Teacher
- Marina Ní Dhubháin, Dramatist- meeting secretary
- Bernard Ó Brádaigh – Branch Librarian
- Theresa Rafter Moriarty – Former scheme worker at An Diséart
- Ruth Ní Fhionnáin - Dlíodóir
-

The Main Object for which the company was formed was

Constitution of An Díseart

Main object: To establish, promote and operate a centre for study and mediation for the promotion of the native religious traditions of Ireland.

Subsidiary Objects: As objects incidental and ancillary to the attainment of the Main Object, the Company shall have the following subsidiary objects:

A) To provide for the following of the doctrines and beliefs of the native religious traditions and to make provisions for religious activities to include academic research into written and other sources of Irish Theology and Spirituality and the study of the languages of the source material in particular Early, Middle and Modern Irish and Medieval Latin to publish and make known the fruits of such study, to conduct courses and seminars in these fields and application of parts of these studies by way of prayer and retreat facilities to all interested and bring these studies to bear on liturgical and pastoral life and practice in Ireland today.

B) To provide for places of worship and devotion with particular emphasis on the native or Celtic religious tradition with celebration of the traditional festivals, days and periods of prayer and courses for groups and individuals, residential and non-residential, and in particular the development of the Dingle Convent Building, Chapel and surrounding gardens as an area of prayer,

study, peace and contemplation, to provide an environment in which religious art, music, poetry and culture would flourish and receives inspiration from religious art from an earlier period.

The powers of the company include:

To provide gardens, greenhouses and grounds for recreation purposes

Sources of operational funding

Our current main source of income is from rental of classroom and office space to Sacred Heart University, Visitor fees, KerryETB, Dingle Global Education and Tuismitheoirí na Gaeltachta as well as donations from community users of the building, the different festivals that use the building are significant contributors in this regard. There is a small amount of income from shop sales as well as also irregular donations from the community, for classes, meetings, exhibitions etc.

Summary of income and expenditure figures

Díseart management accounts - attached

Oibreacha Caipitil

Is é an caiteachas is mó atá díolta amach againn le déanaí ná an t-airgead atá caite ar an rampa, agus le déanaí ar an lobbhadh tirim atá sa bhfoirgneamh agus an gairdín céadfach agus bithéagsúlachta ar bhaineamar leas as cúnamh deontais.

Ós rud é gur seana fhoirgneamh atá againn tá obair éigint ar siúl i gcónaí. Tá gá diamhair le obair a dhéanamh ar síleáil agus an falla ar an dtaobh ó dheas in tSáipéil faoi láthair agus limistéir don ndíon os cionn an phríomh staighre. Tá gá le obair a dhéanamh ar na fuinneoga, cuid acu greamaithe faoi ghlas.

Capital Works

The main area of recent expenditure has been the development of the ramp, and in recent years dry rot work on the walls and the development of the sensory, biodiversity garden, which we benefited from grant aid. The building, due to its age, however, is constantly in need of maintenance. An Díseart has invested in the installation of more energy efficient heating systems, in some rooms, this will be continued. Currently the ceiling and the external wall at the souther end of the chapel of the chapel are in need of attention, and the roof area above the main stairs. The windows in the rooms are in need of repair, many cannot be opened.

Cur síos ar na geallsealbhóirí

Séard atá anseo ná an bord, na hoiliúntaithe, oibrithe scéime, cáirde an Díseart, muintir an Daingin agus go mór mhór ár gcomharsain, iad seo a bhaineann úsáid as an bhfoirgneamh ortha san na scoláirí, agus iad san a ritheann ranganna agus imeachtaí eile ann. Daoine a thógann spásanna ar chíos agus na cuairteoirí a thagann ó Éirinn agus thar lear go dtí an Díseart agus na gairdíní.

Description of stakeholders

Our stakeholders consist of the Board, the trainees/scheme workers, Cáirde an Díseart, the townspeople of Dingle, particularly those who are our immediate neighbours, the people of Corca Dhuibhne, users of the building, particularly the students, and those who run classes and other events there as well as visitors, both local and from outside of the immediate area (including Irish and foreign tourists) to our garden and building.

Annual visitor numbers

Annual Visitor Numbers

Is é meánlíon na gcuairteoirí agus na dturasóirí a dhíolann an t-ionad insna blianta roimh Covid ná 5,500 ach tugann go leor eile cuairt ar na gairdíní.

The average number of paying visitors/tourists to the Centre was 5500 before the COVID outbreak, in 2021 and 2022 visitors gave a donation only to avoid handling of money and in 2023 a set fee for the windows was re-introduced. The hours of opening were reduced to adapt to less staff. The hours of opening to the public as set at 10 -1 and 2 to 4 in response to request from the team in the office, who said they did not have enough time to complete

the work, such as accounts. Members of Cairde an Dísirt provide great support in dealing with visitors.

The users of the building consist of those attending classes (Local groups include about 300 people per week in the term time, as well as study abroad programmes from American Universities.

The garden, is open to the public daily and is a place where people gather a substantial number of people avail of the garden on a daily basis.

Situation Review

Achievements to date:

- The building is now in a much better state than when originally acquired, with adequate equipment for classes and we have increased accessibility to the building with the addition of the ramp.
- There is widespread use of the facilities in the building and the garden.
- We have a good reputation in the local community.
- Cairde members assist with dealing with visitors.
- Library with most books catalogued
- Strong Arts programme established including artist in residence programme
- Continued co-operation with SHU including the establishment of the Irish Studies Office and the Deep Mapping programme
- Progress on reducing carbon footprint with the installation of LED lights and air to air heaters in three rooms.
- Established relationship with State bodies to avail of assistance to develop AN Díséart.

Obstacles to achievement:

- Limited funds, and no long-term guaranteed income stream.
- Reduced number of board members, need for more members to continue the work
- Time
- Lack of clear understanding of Mission of An Díséart

Environmental Scan

When first established, Msgr Ó Fiannachta was still with us, and was a well-established academic of very high standing, who drew students of all academic levels to study here, as well as having contacts in various universities. Unfortunately this is no longer the case.

Our gardens, which have been developed to a very high standard, are becoming more and more a gathering place for visitors, and have developed into a central area for the community and visitors, who visit every day and more for concerts and other cultural events, it is hoped to be able to maintain this level of use.

Dingle has been a vibrant tourist town for several years, and (apart from recent Covid difficulties) continues to grow in this regard. In the coming years the centre will be promoted to offer cultural experiences to visitors.

To the benefit of An Díseart, a nearby carpark has been extended, however, there is very limited on-street parking near the building, and no direct access to it (making it less obvious to passers-by, and even more so to passing motorists).

Key issues that will affect the future of the organisation

A guaranteed source of income.

Having the where with all to provide proper employment to staff.

The continued growth of Dingle as a lively tourist town.

Having the income to maintain the building

The makeup of the Board, with new members joining as appropriate

Continuing relations with Sacred Heart University

The ability to develop and maintain relationships with universities to provide and fill courses courses true to the mission of An Díseart.

The ability to develop the Díseart visitor experience in line with the aims of the place.

Financial Projections

Need John Sheehy to do these.

Strategic Aims or Goals

- 1. Promote Celtic Culture and Spirituality** through the facilitating and organising of events, courses, concerts, publications, seminars, conferences etc. etc.
- 2. To provide an environment where artistic activity is supported**
- 3. Fulfil our responsibilities as a Charity** through developing various policies and other recommendations to comply with the Charities Regulator
- 4. Ensure the building and gardens are available to all** through ensuring their maintenance and accessibility
- 5. Source support to enable proper carrying out of aims** through application of grants, and further encouragement of our Friends group....
- 6. Increase visitor numbers**
- 7. Produce an Annual Action Plan**
- 8. Make adjustments to make operating the building more sustainable**

Review Mechanism: This is a 5-year Strategic Management Plan which will be reviewed annually. During the year, key objectives that require interim review will be the subject of a six-month review. All reviews will take place during board meetings. Progress and problems will be discussed against each objective, using the SMP as a guide. Within the time span of the SMP, we will be working to Annual Action Plans that will break down the objectives for the year into a series of tasks and date targets and other significant factors. This Annual Action Plan contains its own internal review mechanisms.

Appendices

Annual Income and Expenditure Summary Statement,

Relevant Policies,

Consultation process for the SMP

The lead in the development of this plan was Chairperson, Joan Maguire who presented a draft at the January 2024 meeting. The plan was approved at the xxx meeting.

List of committees

Spioradáltacht agus Eiceolaíocht : Bríd Enright

Cultúr agus Ealaíon : Marina Ní Dhubháin, Sr. Eileen Clear

Oidhreacht : Bernard Ó Bradaigh

Oideachas : Sr. Marie de Bhál

Áiseanna agus Airgeadas : Theresa Rafter Moriarty and Mícheál Ó Conchúir

Pádraig Foley, Joan Maguire, Ruth Ní Fhionnáin

List of trainees and staff

The day-to-day operation of an Díseart is greatly aided by participants in the Solas and Scéim Soisialta Tuathaigh Schemes, and members of Cáirde an Dísirt, and Theresa Rafter Moriarty who recently retired from the SST scheme and provides services as a Covid officer.

The current (2024) team are

Scéim Sóisiliata Tuathaigh

Elaine Hilliard

Solas

Joe Garvey

Paidí Budhlaeir

Kevin Martin

Seán Brosnan

The list of registered Cairde an Disirt is:

Sarah Partington

Geraldine Moore

Finn Mac Donnell

Abigail Joffe

Mary Lavery Carrig

Anne Mescher

Dr. Aoife Granville

Thomas J Healy

Maggie Breen

Mary Ferguson

James Farrell

Naoise Casenove

Tonnie Lemmens

Stella Doyle

Gabor Peli

Elizabeth Uí hUigín

Rosemarie Lieb

Cait M Ó Beaglaoich

Ilonka Miklosi

Micheal O'Coileáin

Maria Ní Mhurchú

Máire Uí Dhúbhain

Seamus O'Hara

Dómhnaíl Ó Bric

Bríd Ní Mhoráin

Kevin O'Keeffe

Anne London

Contact Details

Díseart Institute of Irish Spirituality and Culture

Sráid an Doirín,

Daingean Uí Chúis,

Co. Chiarraí,
Éire.
V92 VW74

T: 353 66 9152476

Registered Charity No: 12691

www.diseart.ie

Augisín

Plean Oibre 2024
tagtha ón lá le Séamus O Hara

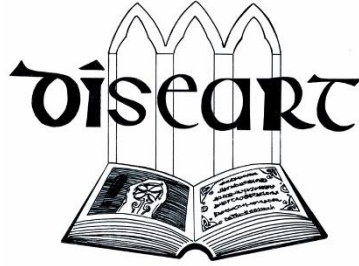
Plean Ealaíona (le teacht)

Plean Oidhreachta – le teacht

Plean Spioradáltachta - le teacht

Plean Oidhreachta (le teacht)

Plean don Ghairdín (le teacht)



Polasaí Bhainistíocht Airgeadais don Díseart

Freagrachtaí

- Aithnímid go bhfuil ollfhreagracht do bhainistíocht airgeadais ar na hlontaobhaithe
- Údaráimid (mar shampla fochoiste airgid) chun tascanna a chomhlíonadh

Buiséadú

- Ullmhaímid buiséad bliantúil mar pháirt dár bplean oibre bliantúil
- Níl an buiséad bailí go dtí go mbíonn sé faomhaithe ag an foras rialaithe

Caiteachas

Bíonn gach íocaíocht nach ó mhionairgead é údaraithe ag beirt stiúrathóirí agus íoctha ag an trú duine.

- Bíonn gach caiteachas údaraithe doicúiméadaithe i scríbhinn ag an gcisteoir (ríomhphost inghlactha)
- Féachtar go h-eisceachtúil ar gach caiteachas nach bhfuil réamhúdaraithe sa bhuiséad agus ar gach caiteachas os cionn 5000 euro in aon mhí amháin agus caithfidh san a bheith réamhúdaraithe ag an bhforas rialaithe
- Caithfear gach sonrasc a phéireáil lena ndeimhniú údaraithe caiteachais
 - Caithfidh gach sonrasc a bheith nascaithe leis an mhír bhuiséadach chuí
- Beidh sonraisic údaraithe agus íoctha laistigh do 31 lá
- Deintear athbhreithnú ar údaraithe caiteachais go ráthúil agus leantar suas aon sonrasc atá ag seasamh amach
- Baineann sé seo freisin le horduithe seasta agus le dochair dhíreacha
- Deintear gach caiteachas a nótaíl i scarbhileog mhíosúil
- Deintear gach ioncam a nótaíl i scarbhileog
- Deintear comhdú ar gach páipéarachas a bhaineann leis.

Mionairgead:

- Coimeádtar an sruth mionairgid san oifig nó i dtaisceadán muna bhfuil duine ar bith i láthair

— Ní féidir níos mó ná €100 a bheith sa tsruth

Caithfear admhálacha a fháil agus a choimeád do gach caiteachas mionairgid

Costaisí as póca oibrithe deonacha ,lena náirítear costaisí iontaobhaithe

— Seo a leanas na costaisí atá ceadaithe :

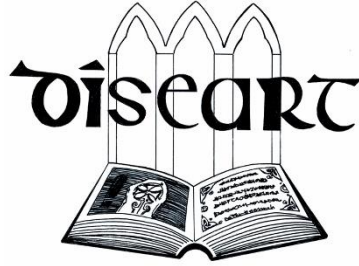
—Caithfear éilimh chostaisí a chur isteach chomh luath agus is féidir tar éis a dtarlú

— Bíonn éilimh neamhbhailí muna gcuirtear isteach iad lastigh de sé mhí

— Tá admhálacha riachtanach do gach costas

—Is féidir costaisí suas go €30 a éileamh ó mhionairgead

—Caithfidh costaisí thar €_____ a bheith réamh údraithe go foirmeálta ag an foras rialaithe



Polasaí Oibrithe Deonacha

Deineann an Díseart, Institiúid do Chultúr agus Spioradáltacht Ghaelach , taighde , cúrsaí agus imeachtaí cultúrtha i ngach gné don Spioradáltacht Ghaelach agus don gCultúr Ceilteach ar a bhfuil diagacht, teanga , litríocht, ealaíon, dlíthe, béaloideas, luacha , spioradáltacht, stair, ceol , seandálaíocht agus custaim a chur chun cinn

Is iad ár n-oibrithe deonacha an achmainn is luachmhaire atá againn. Spreagaimid agus tacaímid le rannpháirtíocht ag gach leibhéal dár n-eagraíocht agus laistigh do gach gníomaíocht chuí .

Tús

Tá an polasaí seo againn chun téarmaí tagartha a leagadh amach d'oibrithe deonacha , do bhaill an Bhoird agus dóibh siúd atá faoi oilúint i slí atá chomh mholtach agus tacúil. Is duine an oibrí deonach a thugann a c(h)uid ama agus seirbhís chun cuidiú leis an Díseart ,taobh amuigh de theorainn fostaíochta íochta agus gnáthfhreagracht , chun a mhisean a chur i gcrích . Tá sé i gceist go gcuideoidh an polasaí seo leis an Díseart chun cúram a dhéanamh leis na hoibrithe deonacha agus san am chéanna fanacht dlíis do Rialachas Ginearálta Cosaint Sonraí (GDPR),

Is oibrithe deonacha iad, baill an Bhoird ina measc, furmhór na ndaoine atá bainteach leis an Díseart.

I dtreo is gur féidir linn an chuid is mó a dhéanamh inár n-am teoranta , tá sé curtha romhainn againn oibriú le chéile mar seo :

- Má gheallaimid go ndéanfaimid rud éigin, déanfaimid é.
- Muna féidir linn rud éigin a dhéanamh nó é a dhéanamh lastigh don am a socraíodh, tabharfaimid go leor fógra, i dtreo is gur féidir socraithe eile a dhéanamh.
- I gcónaí déanfaimid cumarsáid cúirtéiseach agus ionraic le chéile agus le ár bpáirtnéirí leasmhara go léir.
- **Is iad na príomhshlite cumarsáide a bheidh againn ná ríomhphost /guthán/ WhatsApp=====le cinntiú**
- Coiméadfaimid gnóthaí rúnda faoi rún.
- Ní tharraingóimid míchlú ar an eagraíocht .
- Taipeáinfimid meas dá chéile as ucht ár n-iarrachtaí deonacha .

Tá =====freagrach as a chinntiú go bhfuil na próiséis sa docuiméad seo leanta.

Beifear ag súil go gcuideoidh gach oibrí deonach eile (Baill an Bhoird ina measc) leis an próiséas seo.

Earcaíocht

— Fáiltimid roimh iarratais chun teacht linn mar oibrí deonach ó aon duine atá sásta le haidhmeanna agus luacha na heagraíochta .

—Sula ndeimhnítear do áit mar oibrí deonach, labharfaimid le chéile go neamhfhoirmeálta, i dtreo is gur féidir linn a chinntú go bhfuilimid ceart dá chéile .

- Nuair atá scil áirithe riachtanach, b'fhéidir go gcuirfimid sonraí gairide poist le chéile don oibrí deonach/oibrithe deonacha a fhéadfadh a bheith ar an dream is fearr chun na tascanna seo a chomhlíonadh .

— I gcónaí fáiltimid roimh thagairtí agus coimeádaimid an ceart gan ach iarrathóir ar oibrí deonach a roghnú. Beidh ar gach duine a roghnaítear tréimhse trialach d'aon mhí amháin a dhéanamh.

—Nuair a deimhnítear go bhfuil áit ar fáil, cuirfimid na mílte fáilte romhat mar oibrí deonach nua agus cuirfimid ar fáil an t-eolas atá uait chun a bheith sáite go smior in ár n-eagraíocht

Gníomhaíochtaí agus Freagrachtaí

-I gcónaí cuirfidh an Comhordanóir Oibrí Deonach, ar son an Bhoird, cur síos cruinn ar fáil dos na tascanna a mbeimis ag súil go gcomhlíonfá mar oibrí deonach

— Is mór againn do bhronntanas ama atá á chaitheamh agat lenár n-eagraíocht mar oibrí deonach ach an méid sin ráite, cuireann asláthaireachtaí neamhsceidealaithe le fadhbanna eagrúcháin agus iarraidimid ort go gcuireann tú iad seo in iúl don bhféitheoir a luaithe agus is féidir i dtreo is gur féidir socrúcháin logánta a dhéanamh go pras

Tacaíocht

— Tá meas againn ar do phríomháideachas agus ar do rúndacht

— Déanfaimid aisíoc ar aon chostaisí réamhcheadaithe a tharlaíonn ag déanamh obair dheonach dár

n-eagraíocht

— Cuirtear clúdach árachais ar fáil do gach gníomaíocht dheonach atá faomhaithe

— Bíonn Féitheoir ainmnithe i bhfeighil gach foireann oibrithe deonacha

- Nuair a thagann deiseanna oiliúna agus forbartha ar fáil, spreagfaimid na hoibrithe deonacha chun na cúrsaí seo a dhéanamh mar is cuí

—Táimid, an Bord agus páirtithe leasmhara an Díseart, thar a bheith buíoch dár n-oibrithe deonacha as ucht a gcabhair agus a dtacaíocht , agud déanfaimid gach dícheall chun é seo a thaispeáint ag an leibhéal foirmeálta agus ag an leibhéal neamhfhoirmeálta

—Más gá cuirfimid tagairtí ar fáil dár n-oibrithe deonacha reatha agus dár n-iaroibrithe deonacha

_ I gcónaí fáilteofar roimh do aischothú go dtí an mBord (trí an Comhordanóir Oibrithe Deonacha)

—De ghnáth cuirtear ionad ar an mBord ar fáil d'ionadaí oibrithe deonacha

Coiméad Sonraí agus GDPR_

—Coiméadtar taifead bunúsach riaracháin ar gach oibrí deonach , tá teacht acu orthu seo ag am ar bhith; Scriostear iad seo lastigh de (cuir isteach an t-am) nuair nach bhfuil an duine ina oibrí deonach leis an eagraíocht níos mó

_ Beimid ag súil go gcloífear lenár bpolasaithe agus lenár modhanna oibre (cuirfear iad seo ar fáil nuair a deimhnítear go bhfuilir ag teacht linn) agus go gcoiméadfaidh tú an rúndacht d'aon agus gach eolas pribhléideach a nochtfar duit faid is a bheir mar oibrí deonach.

Sa chás annamh go dtarlóidh fadhbhanna

—Tá sé d'aidhm againn gníomhú go tapaidh agus go cothrom má tharlaíonn deacrachtaí

—Ímpimid ort, má bhíonn aon saghas faidhbe agat id líne oibre linne, teagmháil a dhéanamh le dhéitheoir a luaithe agus is féidir

—Más é an féitheoir foinse na faidhbe nó munar féidir leis an scéal a réiteach, ba chóir don oibrí deonach teagmháil a dhéanamh le Cathaoirleach an Bhoird

— Coimeádimid an ceart oibrithe deonacha a dhíbhirt más rud é nach gclaíonn siad le rialacha na heagraíochta nó nach ndeineann siad a dtascanna deonacha go sásúil

Agus mar chríoch....

Gaibhimid buíochas ó chroí leat as smaoineamh ar theacht linn mar oibrí deonach agus tá súil againn go mbainfidh tú idir thaitneamh agus thairbhe as a bheith ag obair sa Díseart .

Sínte: (Féitheoir Oibrithe Deonacha Ceaptha)

Oibrí Deonach

Dáta:

Dáta:

The Educational Goals of SHU in Dingle and the Díseart Centre for Irish Spirituality and Culture

General Education in the Catholic Tradition

While Irish third-level institutions require 3-4 years of study within their specific discipline, US liberal arts universities require a diverse general education. Typically, the foundational core consists of a variety of courses: two courses in humanities, two in social sciences, two in mathematics and science, and a writing course.

Both Catholic and Protestant universities and colleges in the US provide some exposure to the Christian tradition. In addition to the core courses described above they usually require religious studies and philosophy, and often a specific study of the institution's historical background, or biblical studies. Sacred Heart University was one of the first Catholic universities in the US to be founded as a diocesan mission; it was established by the Irish-American Bishop Walter Curtis of Bridgeport, CT. He was a participant in Vatican II, and he had a vision for integrating a study of Catholic spirituality in contemporary education. All SHU students have foundational requirements beyond the general education courses listed above, which are offered during the semester programs in Dingle:

1. Religious Studies = 3 credits. The course offered in Dingle examines the Celtic spiritual tradition.
2. Philosophy= 3 credits [a Bio-ethics course is offered in Dingle; others to be considered]
3. The Human Journey: Catholic Intellectual Tradition = 6 credits. [CIT I: Ancient to the Renaissance; CIT II: Renaissance to the present] These courses in Dingle add an examination of the Celtic tradition over time by discussing the 'Great Books in the Catholic intellectual tradition' and are SHU's academic signature core seminars; they are a direct reflection of the university's Mission and Core Values. Students relate these ideas and texts to their own lives and the world in which they live. When offered in Dingle these courses include Celtic and Irish Catholic literature.

SHU in Dingle offers several sessions throughout the year:

- A. semester-length programs in the Spring and Fall, which run 14 weeks
- B. intensive two-week sessions in early January, mid-May, and end of May into early June

Irish Studies

All courses in Dingle are vetted by the SHU in Dingle Council to ensure a meaningful Irish component to the course. Some courses study Irish culture and history directly (History, Literature, Religious studies, Archeology, Music, etc.) or the Irish environment (Marine Biology, Ecology, Micro-biology, etc.); others are more and comparative in nature (Nursing, Exercise Science, Economics, etc.).

Irish Language

SHU in Dingle has been developing a plan to ensure that every student has some exposure to the Irish language as part of a Dingle education in the short-term sessions, and an opportunity for more in-depth study and exposure during the semester, with a course on Irish traditional music and Irish language & culture.

Centres of Excellence in Dingle

A. SHU in Dingle has two academic areas:

1. Undergraduate education for North American students (perhaps some graduate in the future)—with tuition limitations for European students; this is well under way.
2. Development of a research centre for scholars, mainly North America and Europe. In addition to individual research, SHU in Dingle has developed and hosted several conferences.

April 2017: Advanced Practice Nursing Summit. Co-sponsored by SHU and College of Nursing, ITT.

June 2017: Sea, Land, and Spirit: Coastal Environments in the west of Ireland. 75 presentations and 125 participants. Co-sponsored by SHU, UCC, ITT, CIT Ireland.

April 2018: Oceans Past Platform (OPP), Agenda Deep Time workshop. Co-sponsored by Trinity College, Dublin (Poul Holm) and SHU.

--other conferences are currently being planned for 2020 & 2021.

B. SHU in Dingle has identified three concentrations that highlight the importance of Dingle:

1. **Celtic Studies**: as a town in a Gaeltacht region, and in the west of Ireland, Dingle is the home of important Blasket writers, has a rich musical history, has a comprehensive library and archives from Monsignor Pádraig Ó Fiannachta; and seeks to develop a collection of the writings of other Irish scholars; as well as collections from other writers in the west of Ireland. Thus, Dingle offers an important place to study Celtic literature, history, language, and spirituality.

2. **Maritime Studies**: Dingle is the 4th largest fishing port with one of only four aquariums in Ireland that is expanding and developing a Maritime Research Centre. Dingle offers a great opportunity to develop the fields of maritime ecology and biology. At the heart of Christian spirituality for centuries has been a regard for creation and its creatures. The US Conference of Catholic Bishops, in “Renewing the earth,” underlined the importance of being stewards of the earth, and as stewards, “we seek to explore the links between concern for the person and for the earth and for natural ecology and social ecology. The web of life is One.”

3. **Science and Nursing**: SHU in Dingle has developed important working relationships with the College of Nursing at ITT, Bon Secours Hospital, and University Hospital Kerry in Tralee. SHU nursing students have unique opportunities to observe health care in Ireland, and all institutions have collaborated on best practices, as well as gain a rich comparative understanding a health care in different countries and global health concerns continually grow. The Catholic tradition of nursing education seeks to provide students with a holistic,

compassionate care to all those in need, and in Dingle they are presented with the healing tradition in Ireland.

Community:

SHU in Dingle is committed to working with the local Dingle community. The goals are volunteerism and cooperation: internships in the Aquarium, tourism, and marketing businesses; marching in parades; beach clean-ups; and working with school children and sports.

Thus, the goals of Díseart and SHU are closely aligned in a unique way.

Deep Mapping Project with SHU

The Sacred Heart University campus in Dingle (SHU in Dingle), County Kerry, Ireland, has a mission to offer education to third-level students and to partner with An Díseart Centre of Irish Spirituality and Culture :: Ionad Spioradáltachta agus Cultúir Ghaelaigh, and with the Dingle Oceanworld Aquarium/ Mara Beo, as well as with the town and peninsula of Dingle as a member of the community. SHU in Dingle has also been in partnership with several Irish universities, including Munster Technological University, University College Cork, Trinity College Dublin, University of Galway, and Queen's University Belfast collaborating on workshops, conferences, and publications.

To this end, SHU in Dingle has created several research projects that look at the natural and built environment of the Dingle peninsula and look for important ways to promote sustainability. For several years it has monitored weather and sampled soils to determine patterns of climate change. It has also co-sponsored various conferences and workshops that offer educational opportunities students and scholars. See the list of conferences and workshops on the www.shuindingle.com site.

This project seeks to record the geographical, environmental, historical and cultural places on the Dingle peninsula. The idea for this project arose after the discovery in April 2021 of a Bronze Age burial tomb, which led to the realization that there is still much to discover and record.

The Dingle peninsula can be considered an outdoor museum, with its Bronze Age tombs, medieval chapels, oratories and monasteries, and old stone cottages, as well as spectacular mountains, hills, ocean coves and cliffs. Yet in an ever-changing environment, preservation and sustainability are key to its future, and this can only come from a deeper knowledge of all that it contains.

This new project, Chorca Dhuibhne / Deep Mapping / Dingle Peninsula, uses the term 'deep mapping' as a guiding methodology. The new methodology is one of the newest approaches in environmental humanities that seeks to understand the totality of human cultural heritage as rooted in a place.

Literary theory has advanced a geocritical method referred to as "literary cartography" that studies places described in literature by several authors as well as the effects of literary representations of a given space. In this way writers map their worlds, exposing a rich topography that includes physical features and local history and culture. This investigation has led to the deep mapping that goes beyond the physical characteristics and includes memories and oral history, folklore, archeology, weather, and science, with a goal of establishing a multi-layered record of a specific place in relation to its global connections.

Nessa Cronin, in an article "Deep Mapping Communities in the West of Ireland," has highlighted some important considerations. She underlines that deep mapping has "...more contemporary concerns about how people inhabit their 'home- places' and indeed how communities both inherit and create their cartography of belonging through everyday social and cultural practices. Community mapping is an act of expressing and making tangible that which is tacit and often remains intangible, inaudible, and invisible to people 'outside' of the immediate community or locale. While such work may appear to be 'just' an expression of a local community mapping exercise, it may also incorporate strands of the global, whether through the expression of shared concerns about the environmental degradation of local water systems or mapping projects that acknowledge migrant spaces (whether 'old' or 'new') within existing local communities. Such various (and variable) ground truthings offered both method and material for their own deep mapping of place." [1]

Some common elements of deep mapping are:

1. A multi-disciplinary approach, especially humanities and science. According to Alison Calder, it is a type of “vertical travel writing” interweaving “autobiography, archaeology, stories, memories, folklore, traces, reportage, weather, interviews, natural history, science, and intuition.” [2] Add to this music, architecture, food, clothing, folk medicine, religious rituals, fishing, and farming. This recognizes that spaces are experienced differently by a multitude of people both at one time and over many years.
2. The meaning and lore of place is central. In Irish *Dinnseanchas* [variations, *Dindsenchas*] traditionally meant the lore of place and associated stories, although in contemporary usage it can mean topography. Deep mapping explores the connection between the vast number of people who have inhabited a geographical place and have “spatially framed identities and aspirations out of imagination and memory.” [3] This is captured in Seamus Heaney’s poem ‘In Gallarus Oratory’, “You can still feel the community pack ... Founded there like heroes in a barrow/ They sought themselves in the eye of their King/ Under the black weight of their own breathing. And how he smiled on them as out they came, The sea a censer, and the grass a flame.” [4]
3. It also involves mapping that is both vertical in time and horizontal (overlapping, conflicting, multiple meanings and stories) at any one time, in a way that allows many voices (spatial narratives) to be heard. Part of the science will be using GIS (geographic information system) mapping. “Within a deep map, we can develop the event streams that permit us to see the confluence of actions and evidence; we can use path markers or version trackers to allow us (and others) to trace our explorations; and we can contribute new information that strengthens or subverts our argument, which is the goal of any exploration.” [5]
4. The final goal is a multimedia and multilayered presentation in print, web design, video, music, dance, and visual art, to be a resource and guide for students, scholars, and the general public.

[1] Nessa Cronin, in an article “Deep Mapping Communities in the West of Ireland,” in *Thinking Continental Book Subtitle: Writing the Planet One Place at a Time*, eds. Tom Lynch, Susan Naramore Maher, Drucilla Wall, O. Alan Weltzien. University of Nebraska Press, 2017, 47.

[2] Alison Calder. “The wilderness plot, the deep map, and Sharon Butala’s changing prairie.” *Essays on Canadian Writing*, 77 (Sept. 3):164-185.

[3] David J. Bodenhamer, John Corrigan, Trevor M. Harris, *Deep Maps and Spatial Narratives* (Indiana UP, 2015).

[4] Seamus Heaney, "In Gallarus Oratory," in *Door Into The Dark* (1969).

[5] Bodenhamer, Corrigan, Harris, *Deep Maps and Spatial Narratives*.

Kerry Education and Training Board

Existing co-operation:

During term time KerryETB holds Irish language classes in the building and English classes for refugees from Ukraine.

New Co-operation

New opportunities for co-operation are developing with KerryETB who will remain in the Rice house for the next 15 years.

We are extending this co-operation into the garden, where the greenhouse will become a classroom for gardening courses.